

# **USB 2.0 Flash Drive**

## **User Manual**

# Content

<b>Introduction.....</b>	<b>2</b>
Features and Specifications.....	2
System Requirements.....	3
Precautions.....	3
<b>Installation of USB 2.0 Flash Drive Driver.....</b>	<b>4</b>
Installing Driver for Windows 98SE.....	4~5
<b>Installation of USB 2.0 Flash Drive Utility Program.....</b>	<b>6</b>
Disk Partition and Security Setup Function.....	7~10
Log in Security Disk.....	11
Partition Change and Password Setup.....	12~14
Change Password.....	15~16
Disk Format.....	17~18
Make Bootable Disk.....	19~20

# Introduction

Congratulations on your purchase of this Hi-Speed USB Portable Flash Disk! This USB 2.0 Flash Drive is your friendly, secure, and lightweight removable mass storage device disk. It plugs through the USB port so your computer will quickly detect and configure the disk without needing to restart the computer. You read, write, copy and delete files just the same way as you use a disk drive. And since it is a large capacity disk, you can also store your MP3, video, and application files in the USB 2.0 Flash Drive.

One very important feature of this USB 2.0 Flash Drive is that it also supports ReadyBoost function for Windows Vista. ReadyBoost helps improve OS performance by using your USB 2.0 Flash Drive as additional memory cache without having to add memory inside your PC.

This USB 2.0 Flash Drive also provides great flexibility and data security with disk partitioning and password security features. The USB 2.0 Flash Drive Utility allows you to easily manage your USB 2.0 Flash Drive and protect your important personal data.

## Features & Specifications

- Smart and secure removable data storage for business and personal use
- Full Compliance with the Universal Serial Bus Specification v2.0 and v1.1
- Data Write-Protect Switch
- Supports Windows Vista ReadyBoost Function
- Mass Storage Device class compatible so no driver needed in Windows ME, 2000, XP, Mac 9.1 or above. Includes manufacturer driver for Windows 98SE.
- USB 2.0 Flash Drive Utility Program for security and partitioning functions (No additional drivers needed)
- Bus Powered – no separate power supply or battery required
- State-of-the-art NAND Flash Memories
- Shock resistant, noise-free and longer data retention
- Advanced power management mechanism

## **System Requirements**

- Desktop or Notebook PCs with USB port (USB 2.0 port is recommended)
- Operating Systems:
  - Windows 98SE, ME, 2000, XP, Vista
  - Mac OS 9.X or above
  - Linux Kernel 2.4 or above

## **Precautions**

- Keep your USB 2.0 Flash Drive away from high temperature and moisture, and also avoid using it on sunlight exposure.
- To ensure performance stability and increase life cycle, do not plug/unplug your USB 2.0 Flash Drive while transferring data to avoid damage of USB 2.0 Flash Drive.
- To properly unplug the USB 2.0 Flash Drive, you must follow the Safely Remove Hardware Steps. Once Windows show that the USB 2.0 Flash Drive can now be safely removed, you can then unplug the USB 2.0 Flash Drive from the USB port.

# Installation of USB 2.0 Flash Drive Driver

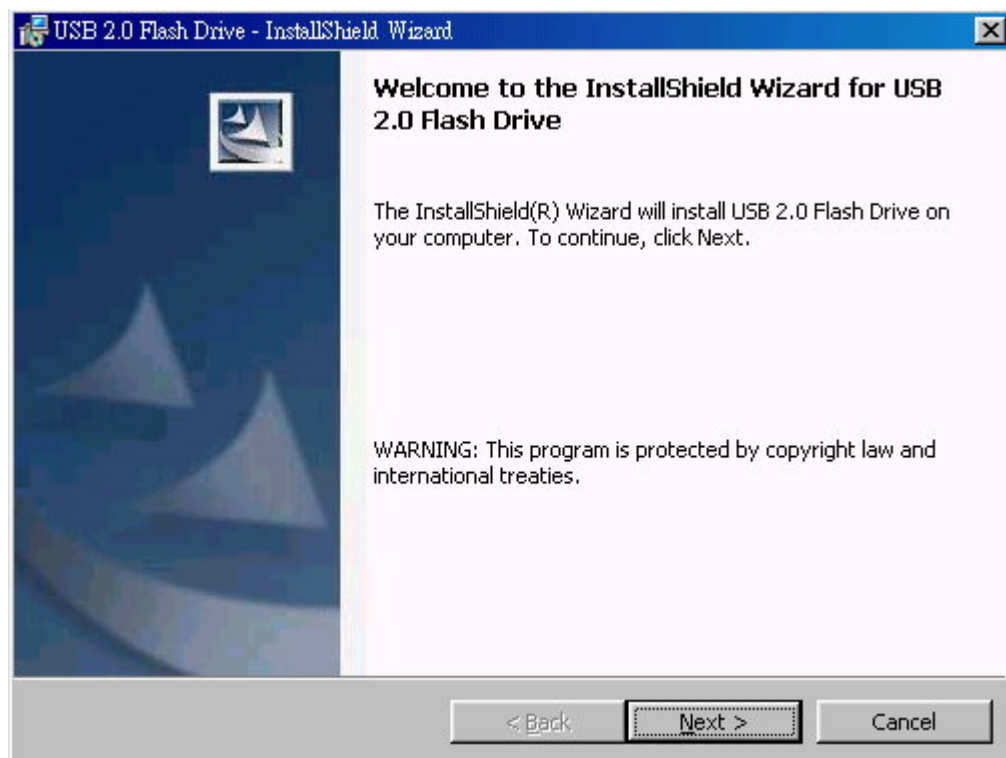
To use the USB 2.0 Flash Drive, you simply plug it into your computer's USB port. Windows ME, 2000, XP and Vista, Mac 9.X or above, Linux Kernel 2.4 or above versions all support the Microsoft USB Mass Storage driver needed to detect and run the USB 2.0 Flash Drive. You don't need to install any driver anymore.

## ■ Installing Driver for Windows 98SE

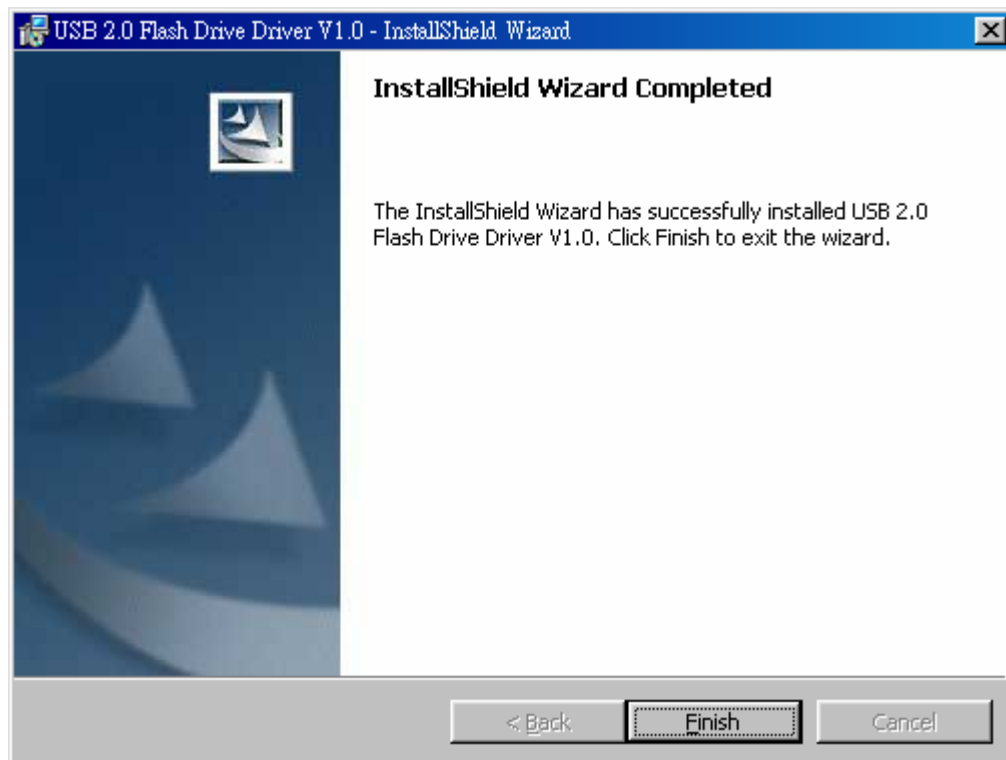
If you have a Windows 98SE, you will need to run the USB 2.0 Flash Drive Utility Setup that will also install the needed USB 2.0 Flash Drive driver for Windows 98SE. Please follow the below procedures to do the installation:



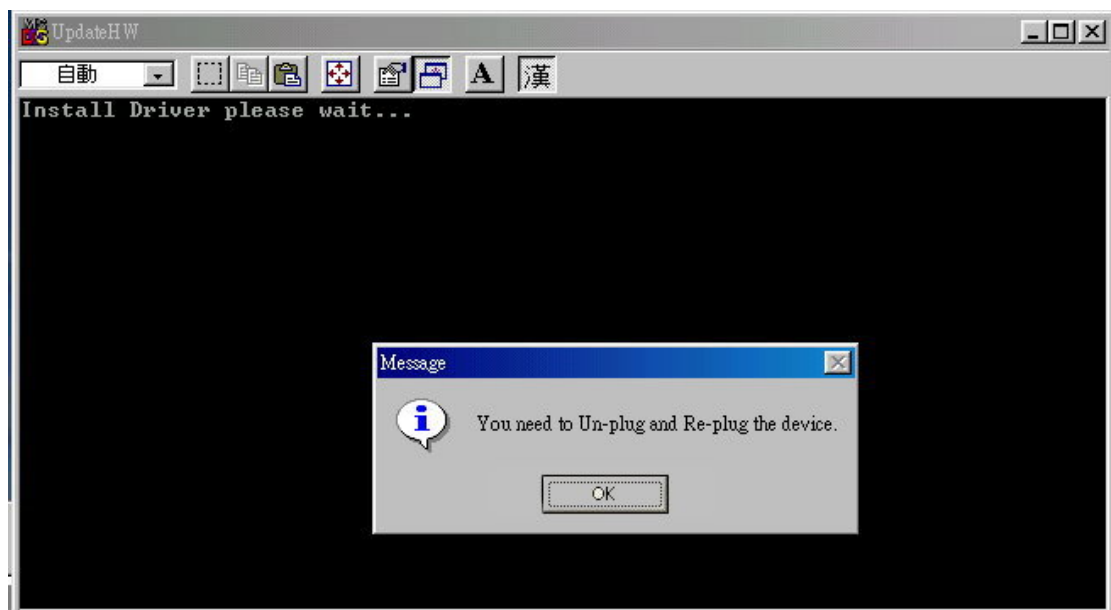
1. Insert the driver CD into your PC and double-click on "USB 2.0 Flash Drive Driver.exe". Please note that only when the driver installation has finished can you plug in the USB 2.0 Flash Drive.
2. After executing "USB 2.0 Flash Drive Driver" installer, the InstallShield Wizard for USB 2.0 Flash Drive will appear. Click "Next" to continue.



3. Once the installation is complete and successful, click “Finish” to continue.



4. After the install driver is complete, click “OK” to finish the setup of USB 2.0 Flash Drive driver. If you have inserted the USB 2.0 Flash Drive, you will need to unplug and plug the device again. After plugging in your USB 2.0 Flash Drive, Windows will automatically detect it and use the installed driver. You will then be able to start using your USB 2.0 Flash Drive under Windows 98SE.



## **Installation of USB 2.0 Flash Drive Utility Program**

This section provides you the information on how to run the USB 2.0 Flash Drive Utility program. The Utility program allows you to set a private security password as well as disk format and partition functions.

The Utility program includes 2 major functions:

### **1. Security function:**

- Login/Logout
- Password Set/Change
- Disk Partition Size Set/Change

### **2. Format :**

- Disk Format
- Make bootable Disk

## ■ Disk Partition and Security Setup Function

1. Insert the driver CD and double-click on “” icon. The USB 2.0 Flash Drive Utility menu will appear as shown below:



2. Move the mouse pointer to the “Lock” icon, and click “Security” as shown below:





3. Afterwards, the Security Menu window will appear as shown below:



4. Click on "Security Config", a window will appear as shown below:



- 4.1 Move the slider bar left or right to adjust the security disk size or enter directly the security disk size (MByte) in the "Protected" column.
- 4.2 Enter in same password into "New Password" and "Confirm" column. (Maximum password length is 26 characters)
- 4.3 If in case you will forget the password, you can enter in a password hint into "Password Hint" column. (Maximum length is 26 characters)
- 4.4 Click "OK" when you complete the partition and password setup.

5. The popup window will then appear as shown below warning you that all existing data in your USB 2.0 Flash Drive will be destroyed and if you want to continue. Click “Yes” to continue.



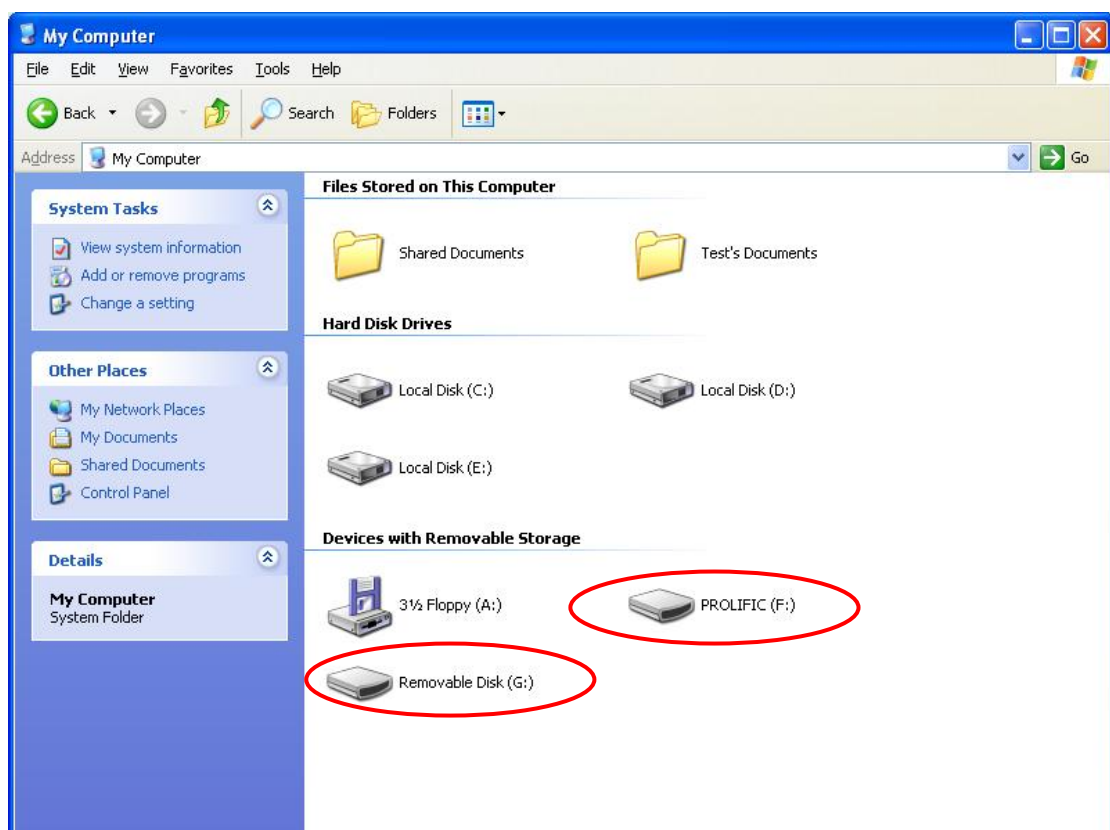
6. The disk partitioning will then start. During this period, please do not unplug your USB 2.0 Flash Drive or power off your PC to avoid disk crash.



7. After disk partition and password set are complete, the “success” popup window will appear as shown below. Click “OK” and re-plug your drive.



8. After plugging the drive, go to My Computer and check if there are two Removable Storage drive letters. One will be the normal drive, and the other will be the security drive partition of your USB 2.0 Flash Drive.



## ■ Login Security Disk

1. After checking if there are two partition drive letters in your removable disk (one is normal drive, the other is security drive), run the Security menu again and repeat steps 1 to 3. (Refer to last section of this document).



2. Click on "Security Login", the window will appear as shown below. Enter your password and click "OK" to access the security disk. If you forgot your password, click on "Hint" button and enter your password hint.



## ■ Partition Change and Password Setup

1. Execute the Security function and go to the Security Menu as shown below.  
Click on “Security Config”.



2. Adjust the slider or enter the new disk size in the “Protected” column. Enter the current password in “Old Password” column, and enter a new password in “New Password” and “Confirm” column. Click “OK” to set the new drive size and password. Note that if no field is entered in the “New Password” and “Confirm” columns, then the old password will remain the same.

The image shows a 'SECURITY' window with a red header. It features a USB drive icon and a slider. To the right of the slider are two input fields: 'Un-Protected' with the value '868' and 'Protected' with the value '100'. Below these are four text input fields: 'Old Password' (containing asterisks), 'New Password' (containing asterisks), 'Confirm' (containing asterisks), and 'Password Hint' (containing '123456'). At the bottom are two buttons: 'OK' with a checkmark icon and 'Exit' with a red square icon.

3. Before continuing, a popup window will appear as shown below to confirm if you want to change the password. Click “Yes” to continue.



4. A popup window will appear as shown below to confirm if you want to continue on the disk size change as all data will be destroyed. Click “Yes”.





5. The disk partitioning will then start. During this period, please do not unplug your USB 2.0 Flash Drive or power off your PC to avoid disk crash.



6. After disk partition and password set are complete, the “success” popup window will appear as shown below. Click “OK” and re-plug your drive. When you log in next time, please use the new password to log in.



## ■ Change Password

1. Execute the Security function and go to the Security Menu as shown below.  
Click on “Change Password”.



2. Enter in the existing password in the “Old Password” column, enter the new password in the “New Password” and “Confirm” columns, and also enter the password hint in the “Password Hint” column. Click “OK” to continue.

A screenshot of a 'Change Password' form. At the top is a red banner with the word 'SECURITY' in large, stylized, blue and white letters. Below the banner is a light beige box with the title 'Change Password'. Underneath are four input fields: 'Old Password' with the text '12345678', 'New Password' with the text '12345', 'Confirm' with the text '12345', and 'Password Hint' with the text '123'. At the bottom are two buttons: 'OK' with a red checkmark icon and 'Exit' with a red square icon.



4. A popup window will appear as shown below to confirm if you want to change the password. Click “Yes” to continue.



5. A popup window will appear as shown below informing that password change was successful. Click “OK” to end. When you log in next time, please use the new password to log in.

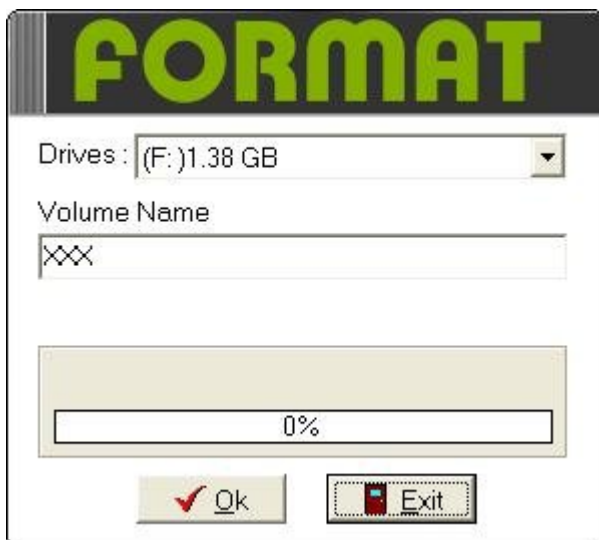


## ■ Disk Format

1. Move your mouse pointer to the “Disk” icon and click “Format” as shown below:



2. The Format window will then appear as shown below. Click the drop-down menu to choose which drive letter you want to format. You may also enter the “Volume Name” for the drive after format. The volume name is shown in the Task Bar and My Computer when you plug in your USB 2.0 Flash Drive. Click OK to continue.



3. A popup window will appear as shown below to warn that all data will be destroyed when you the format the disk. Click “Yes” if you want to proceed with the format.



4. A popup window will confirm that the format is complete as shown below. Click “OK” to close the window.

